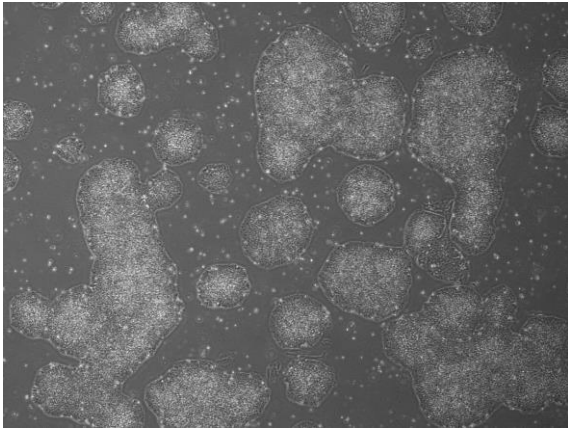
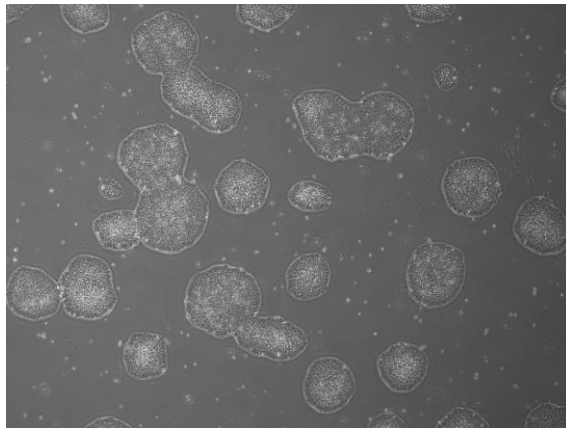


【 CiRA-j-1631 】 Morphology of iPSC colonies

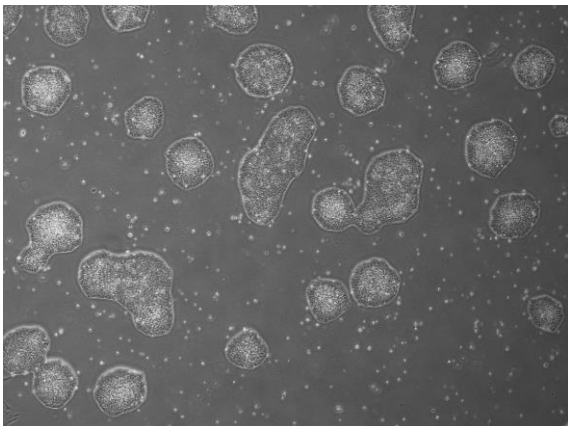
CiRA-j-1631-A: passage-3



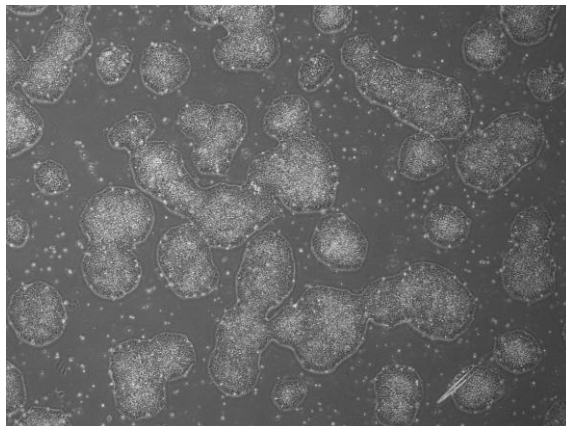
CiRA-j-1631-B: passage-3



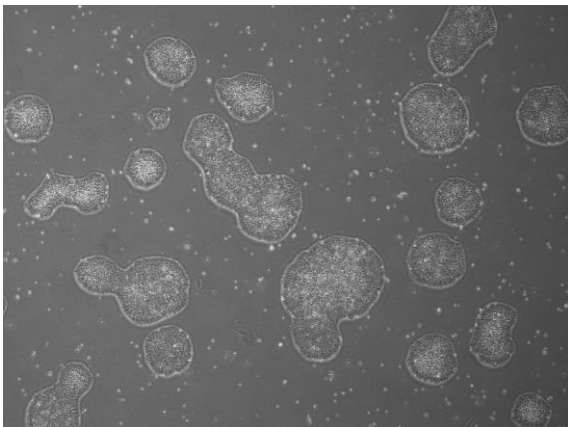
CiRA-j-1631-C: passage-3



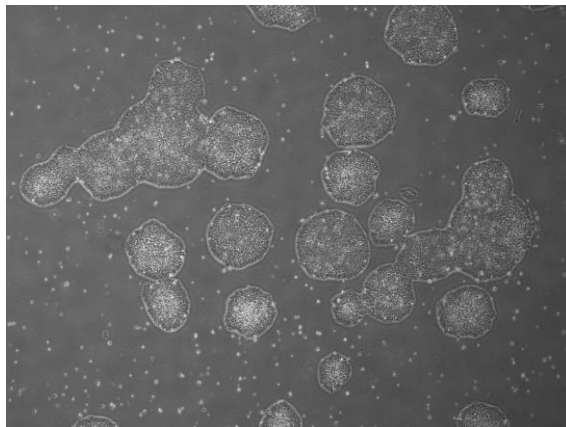
CiRA-j-1631-D: passage-3



CiRA-j-1631-E: passage-3



CiRA-j-1631-F: passage-3



(All images were captured at 4x magnification)